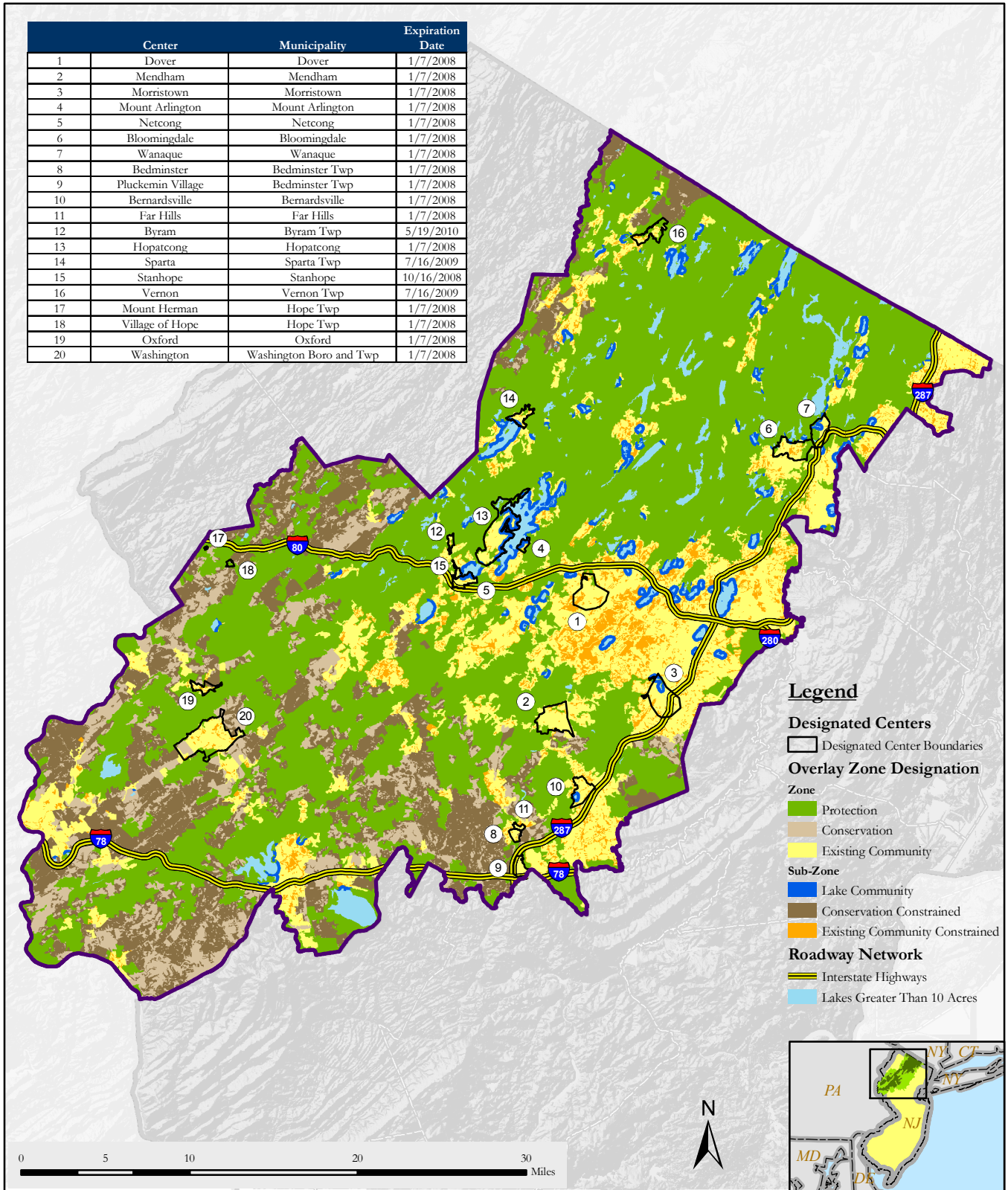


State Planning Commission Designated Centers

Center	Municipality	Expiration Date
1	Dover	1/7/2008
2	Mendham	1/7/2008
3	Morristown	1/7/2008
4	Mount Arlington	1/7/2008
5	Netcong	1/7/2008
6	Bloomingdale	1/7/2008
7	Wanaque	1/7/2008
8	Bedminster	1/7/2008
9	Pluckemin Village	1/7/2008
10	Bernardsville	1/7/2008
11	Far Hills	1/7/2008
12	Byram	5/19/2010
13	Hopatcong	1/7/2008
14	Sparta	7/16/2009
15	Stanhope	10/16/2008
16	Vernon	7/16/2009
17	Mount Herman	1/7/2008
18	Village of Hope	1/7/2008
19	Oxford	1/7/2008
20	Washington	Washington Boro and Twp



The Highlands Council makes no representations of any kind, including, but not limited to, the warranties of merchantability or fitness for a particular use, nor are any such warranties to be implied with respect to the information contained on this map. The State of New Jersey shall not be liable for any actions taken or omissions made from reliance on any information contained herein from whatever source nor shall the State be liable for any other consequences from any such reliance. Additional sources of information may include NJDOT and NJDEP GIS digital data, but this secondary product has not been verified by NJDOT or NJDEP.

Highlands Regional Master Plan Final Draft, November 2007



Sources:
New Jersey Highlands Council, 2007
New Jersey Office of Smart Growth, 2007